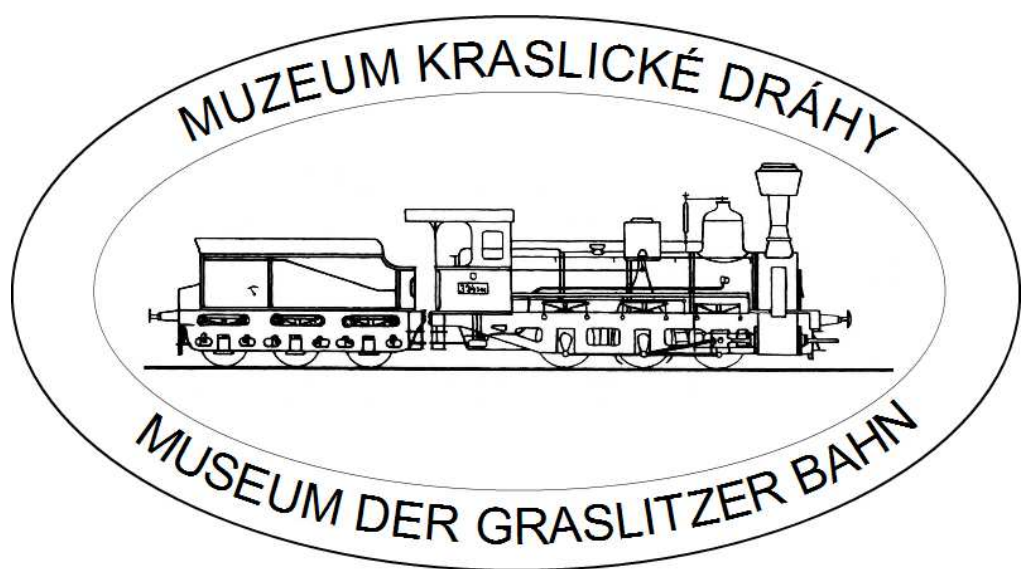


Železniční spolek Klub M 131.1

zve do

Muzea Kraslické dráhy,



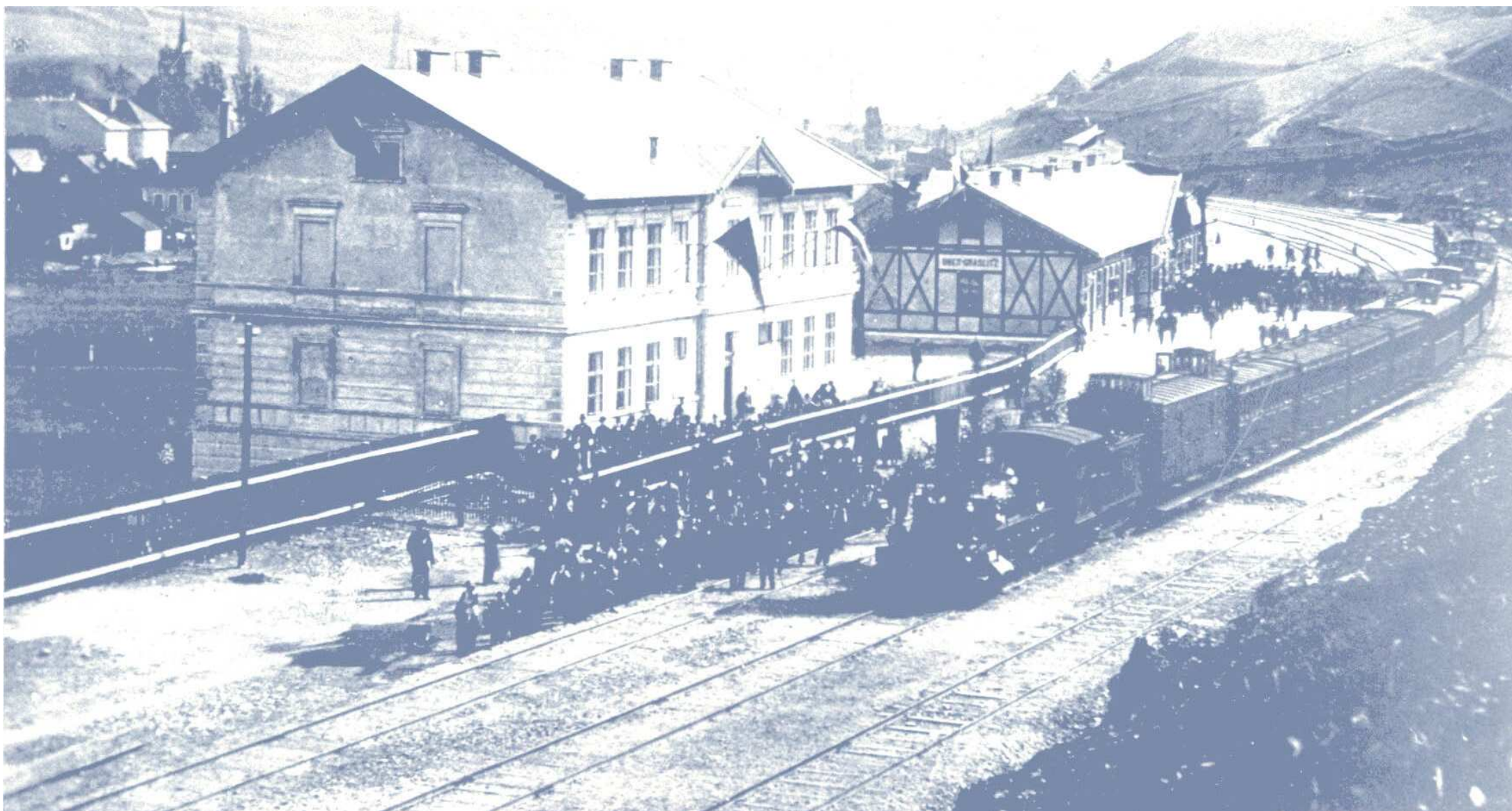
které je umístěno v bývalé restauraci nádraží Kraslice (trať č. 145 Sokolov – Zwotental)

Otevírací doba:

31.3. – 1.12.2012

(jen soboty)

od 9.00 do 16.00 hodin



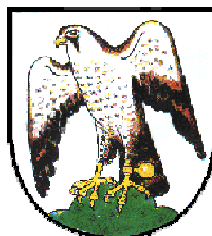
Vstupné:

**Bližší informace na tel. č. 606 685 265 a 602 203 548
www.mkd.websnadno.cz**

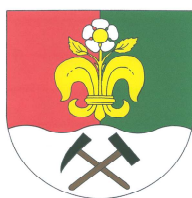
Děti: 10 Kč

Dospělý: 20 Kč

Rodinné: 40 Kč



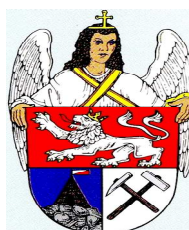
Sokolov



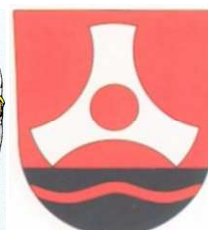
Svatava



Josefov



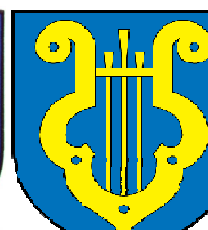
Oloví



Rotava



Kraslice



Klingenthal